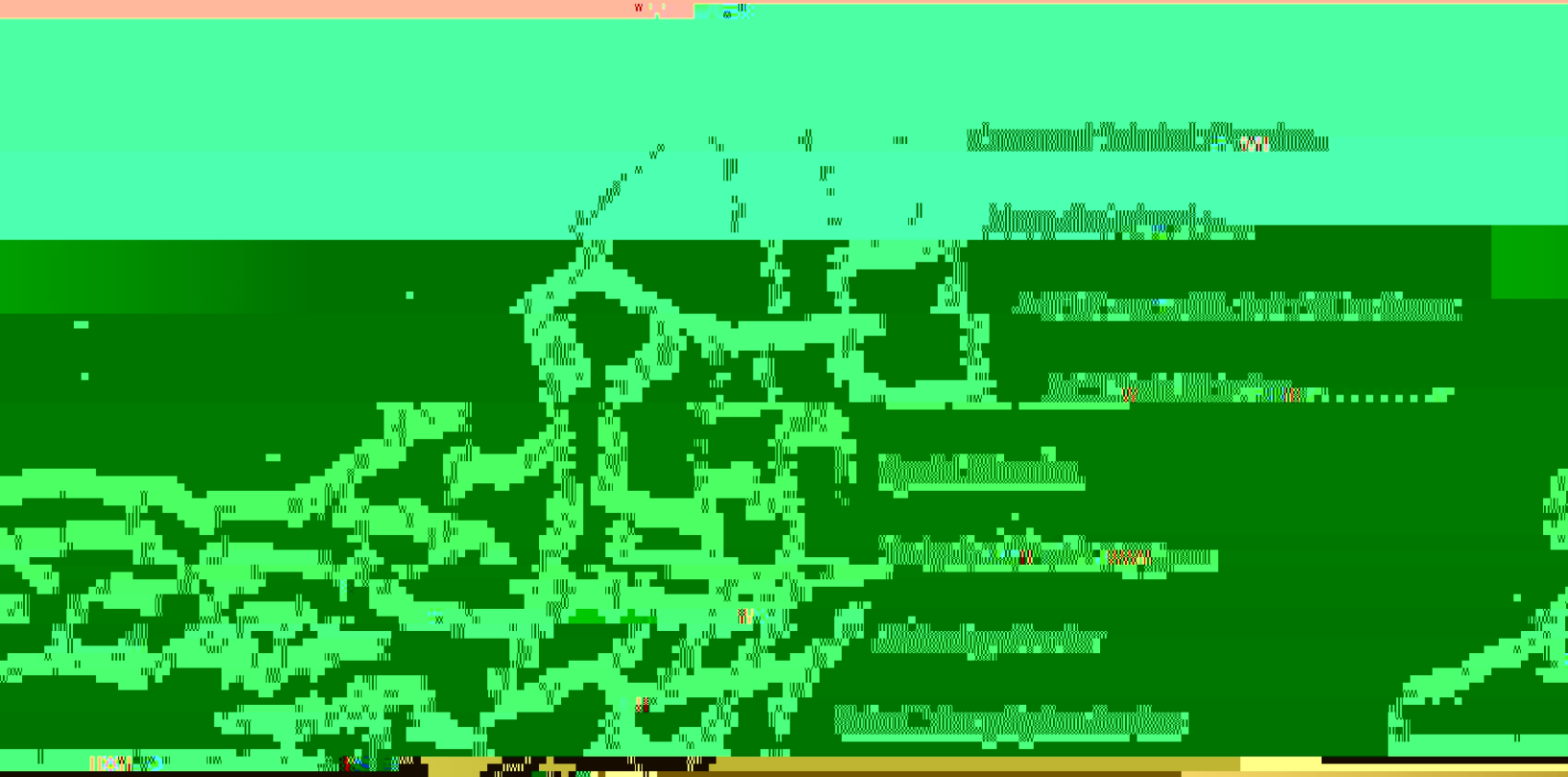


# Board of Directors



2016-2017



2016-2017



2016-2017

2016-2017

Western Suffolk BOCES

**Western Suffolk BOCES  
Board of Cooperative Educational Services  
2016-2017 Report Card**

**Table of Contents**

	<b>Page</b>
<b>Component/Non-Component</b>	<b>ii</b>
<b>Indicators of BOCES Performance</b>	
<b>Career &amp; Technical Educati</b>	.. <b>1-3</b>
<b>Alternative Education</b>	. <b>4-6</b>
	... <b>7</b>
	.... <b>7</b>
<b>Special Education</b>	
<b>Special Education Enrol</b>	. <b>8</b>
	... <b>9-11</b>
<b>Professional D</b>	<b>12</b>
<b>Technology Servi</b>	<b>13</b>
<b>School Library Syst</b>	<b>14</b>
<b>2016-2017</b>	<b>15</b>

Prior editions of the BOCES Report Card included other data representing information on component districts.

The following data were not included in this report.

State Testing Program for All Component Districts

Graduation Results

# **Western Suffolk BOCES**

## **Component Districts**

Amityville UFSD  
Babylon UFSD  
Cold Spring Harbor CSD  
Commack UFSD  
Copiague UFSD  
Deer Park UFSD  
Elwood UFSD  
Half Hollow Hills CSD  
Harborfields CSD  
Huntington UFSD  
Kings Park CSD  
Lindenhurst UFSD  
North Babylon UFSD

# Indicators of BOCES Performance

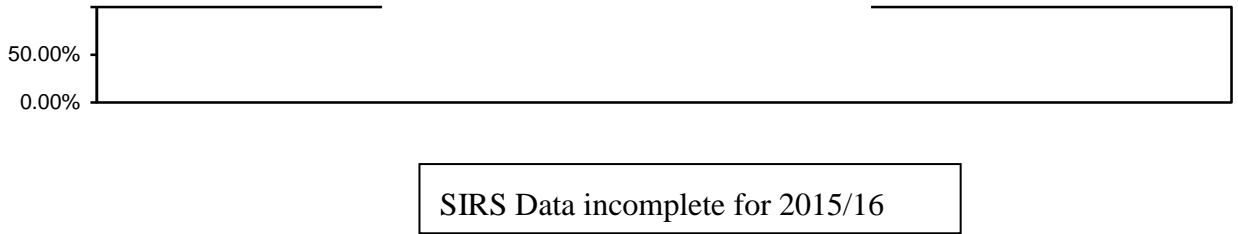
## Career & Technical Education (CTE)

BOCES CTE classes, offered primarily on a half-day basis, prepare high school students from component districts for skilled work force careers. Most CTE programs require two years to complete.

	General Education Students	Students with Disabilities	General Education Students	Students with Disabilities
	2015-16	2015-16	2016-17	2016-17
<b>Number of 11<sup>th</sup>/12<sup>th</sup> grade students enrolled in a CTE two-year sequence:</b>				
<b>First-year students</b>	631	322	595	336
<b>Second-year students</b>	575	278	526	264
<b>Second-year students completing</b>	494	247	431	

## CTE Student Performance on Perkins Indicators Who Left School in 2016

Data Source: SIRS

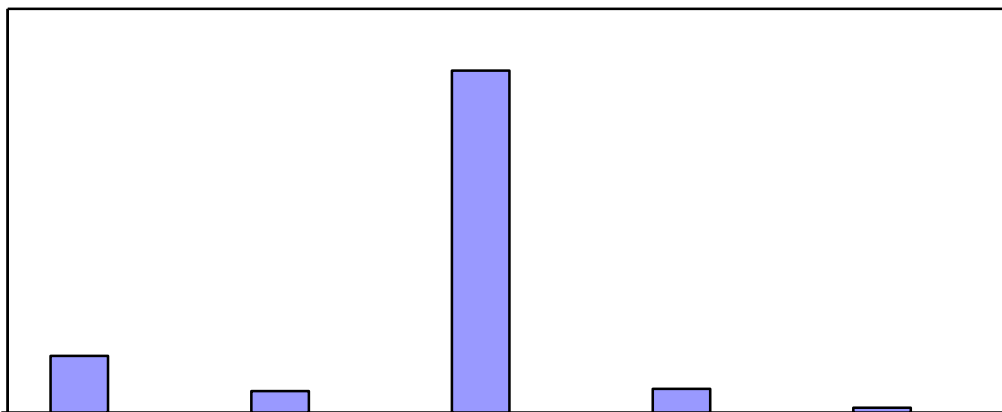


## Status of Career and Technical Education (CTE) Students 2016 Placement Outcomes

BOCES Surveys CTE concentrators six months after they last attended their CTE program to determine if they are employed or continuing their education. Data Source: CTE Placement Report <http://www.p12.nysed.gov/cte/perkins4/docs/RptCardsFinal16-170412116.pdf>

### Total Placement

This BOCES	State Target
93%	91.5 %



**General Education Development Leading to (GED)  
For CTE Students Age 16-18  
2016-2017**

The GED Test Battery is a national examination that is available to adults who did not graduate from high school or whose diplomas may not be recognized by New York State. In New York State, the GED Tests are offered in English, French and Spanish.

**Number of students who:**

<b>Grades 9-12 Programs Leading GED</b>	
<b>Half- day</b>	



**Alternative Education State Testing Program**  
**2016-2017 School Year**

State Assessment- Regents Exams	Counts of Students Tested				Percentage of Students Tested		
	Below 55	55-64	65 and Above	Total	Below 55 - Percent	55-64 - Percent	65 and Above - Percent
Integrated Algebra	6	2	19	27	22.22%	7.41%	70.37%
Geometry	0						



**Alternative Education Performance of Students  
2016-2017 School Year**

State Assessment- RCT Exams	Counts of Students Tested				Percentage of Students Tested		
	Below 55	55-64	65 and above	Total	Below 55 Percent	55-64 Percent	65 and Above Percent
RCT Grade 10 Mathematics	0						



<b>Entered post-secondary education or training</b>	512	598	0*	496	97%	592	99%	0*	0.0%
---	-----	-----	----	-----	-----	-----	-----	----	------

## **Special Education**

### **Special Education Enrollment and Tuition**

When placing students, districts select among classrooms with different student/staff ratios consistent with each student's Individualized Education Program (IEP). The following are four of the alternatives:

- 12 students per teacher plus one paraprofessional (12:1:1)
- 6 students per teacher plus one paraprofessional (6:1:1)
- 12 students per teacher plus four paraprofessionals (12:1+1:3)
- 8 students per teacher plus 1 paraprofessional (8:1:1)
- 15 students per teacher plus 1 paraprofessional (15:1:1)
- 6 students per teacher plus 2.5 paraprofessional (6:1:2.5)

An addendum of enrollment and tuition information will be attached to this report if this BOCES provides other options of student/staff ratios.

Tuition rates exclude the costs of



<b>Grade 7 English Language Arts</b>	12	5	1	0	18	33.3%	5.5%	0
<b>Grade 8 English Language Arts</b>	15	3	1	0	19	21.0%	5.2%	0
<b>Grade 3 Mathematics</b>	11	2	1	0	14	21.4%	7.14%	0
<b>Grade 4 Mathematics</b>	16	2	0	0	18	11.1%	0.0%	0
<b>Grade 5 Mathematics</b>	11							

**Special Education State Testing Program (**  
**2016-2017 School Year**



## **Students with Severe Disabilities Performance on the**





Response to Intervention

0

0

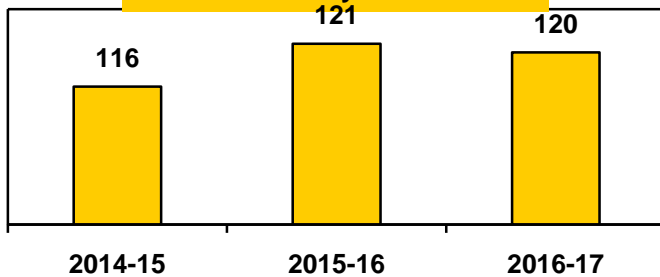
<b>Instructional Media Resources</b>	11/7,100	1	55,000	X	
<b>Model Schools</b>	18/10,300	3	90,000	X	
<b>Other Student Instructional Support</b>	0/0	0	0		



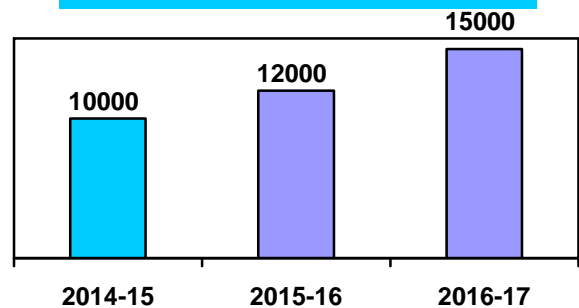
## School Library Systems (SLS)

School Library Systems are state-aided programs set forth in Education Law and regulations of the Commissioner of Education. Each BOCES acts as the educational agency that sponsors the program to provide vital library and information resources to public and nonpublic schools. Each system operates under an approved long range plan of service. Some of the key functions of SLS are: to provide leadership and training through professional development activities; enrich the NYS Learning Standards by providing information literacy awareness and skills; facilitate resource-sharing among its member school libraries; promote advances in technology for information storage and retrieval; focus on cooperative collection development of member school library materials; address the information needs of special client groups; and participate in regional library issues with the public, academic, special and other school libraries. Students, teachers and administrators in each BOCES service area benefit from the programs and services of the school library system. *Data Source: SLS Annual Report*

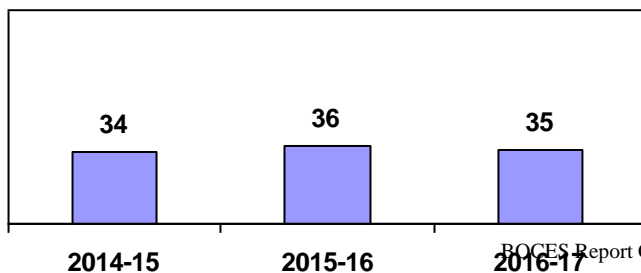
**Number of Library Media Centers**



**Consulting and Technical Assistance Services plus Reference by SLS Staff**



**Number of Professional Workshops**



## 2016-2017 Expenses



